

# Briefing on Progress in Electing Libya's Constitutional Drafting Assembly

21 January 2014

Corinthia Hotel

Tripoli, Libya

# Stages of CDA Election

CONTINUOUS

Legal and regulatory framework

Relations with observers, media, agents, etc.

Public awareness (e.g. voter information)

Procurement of electoral materials

Distribution of materials

Security liaison

Complaints

Training

Preliminary results

Media centre

Tabulation of results

Tabulation centre

Polling & counting

Security liaison – operations centre – media centre

Campaigning & awareness

Voter information/media/accreditation - campaign regulation

Registration of voters

SMS registration - additions and amendments - exhibition of voters lists

Nomination of candidates

Registration - vetting - challenges

Final results

Challenges & appeals

Liaison with judiciary

# Legal & Regulatory Framework

## Principal laws

Law No.8/2013 on the Establishment of HNEC

Law No.17/2013 on the Election of the Constitutional Drafting Assembly

## Regulations in place include

Regulation on Voter Registration

Regulation on Observers and Agents

Regulation on Campaigning

Regulation on Electoral Dispute Resolution

Regulation of Media

Regulation on Candidate Nomination

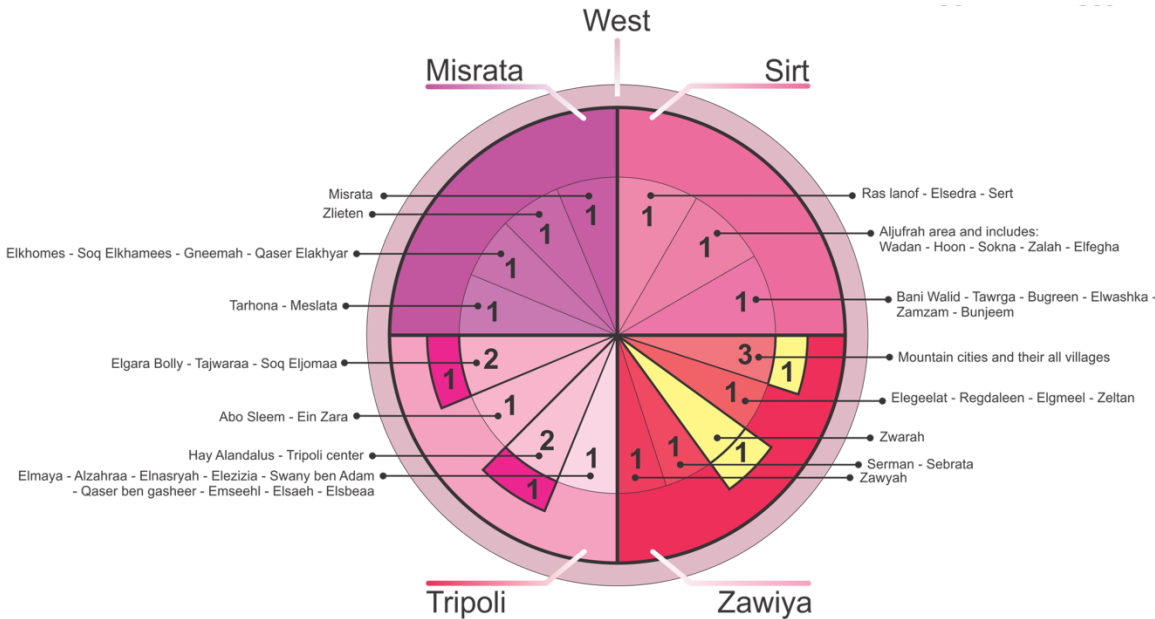
Regulation on Polling and Counting

Regulation on Out of Country Voting

## Regulations in development include

Regulation on Tabulation of Results

# Electoral System Overview



- 60 seats in total
- 20 per region
- Majoritarian system
- Single and multi-member constituencies
- Reserved seats for women (6) and component (6)
- 51 races

# Nomination of Candidates

- Candidate nomination: 6 October to 7 November
- 2 candidates removed in accordance with Law No. 13/2013 on Political and Administrative Isolation
- Final List of Candidates Published on 23 December
- Total Candidates: 649 (64 women)

# Nomination of Candidates

	Main Constituency	Seats	Candidates
WEST	Sirte	3	27
	Misrata	4	48
	Tripoli	4	124
	Zawiya	5	34
	Reserved seats	4	48
		20	281

## Breakdown of candidates for reserved seats

5	Women, West Tripoli
15	Women, Central Tripoli
0	Amazigh, Zuwara
28	Amazigh+, Mountain Cities

EAST	Albatnan	5	46
	Aljabal Alakhdar	5	50
	Greater Benghazi	5	66
	Ajdabiya	4	28
	Reserved seats	3*	30
		20	220

\*Two "substitution" ballots

## Breakdown of candidates for reserved seats

11	Women, Tobruk, Derna, Baida
12	Women, Benghazi, Ajdabiya, Kufra
7	Tabu, Kufra (1 woman)

SOUTH	Sabha	9	74
	Awbari	7	48
	Ghadames	1	2
	Reserved seats	5*	24
		20	148

\*Two "substitution" ballots

## Breakdown of candidates for reserved seats

7	Tabu, Awbari
8	Women, Sabha (1)
3	Women, Sabha (2)
1	Tuareg, Ghadames
5	Tuareg, Awbari

# Public Awareness



Awareness materials produced thus far

- 5 television announcements
- 5 radio announcements
- 5 posters: 320,000 copies
- 5 flyers: 1 million copies
- 4 booklets: 309,000 copies
- 2 stickers: 300,000 copies
- 1,600 electoral centre banners

Follow HNEC on social media



[youtube.com/hnec](https://youtube.com/hnec)



[facebook.com/HNEC.LY](https://facebook.com/HNEC.LY)



[twitter.com/HNECLibya](https://twitter.com/HNECLibya)



# Public Awareness

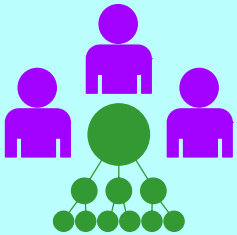


Working with civil society partners to spread information (photos credit: HNEC)



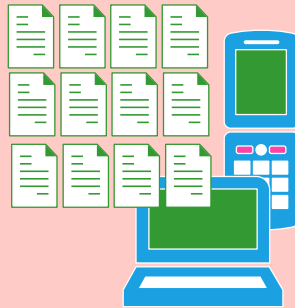
# Registration of Voters

## CHALLENGES AND APPEALS



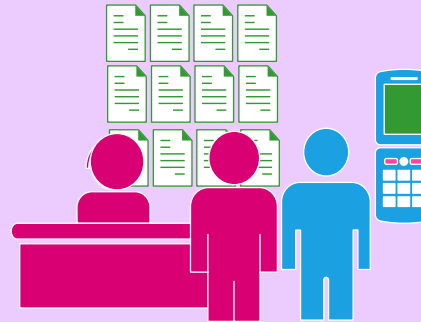
21 January-  
1 February

## EXHIBITIONS PERIOD



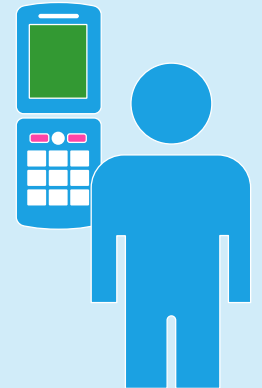
21-23 January

## ADDITION AND ADJUSTMENT PERIOD



11-16 January

## REGISTRATION PERIOD



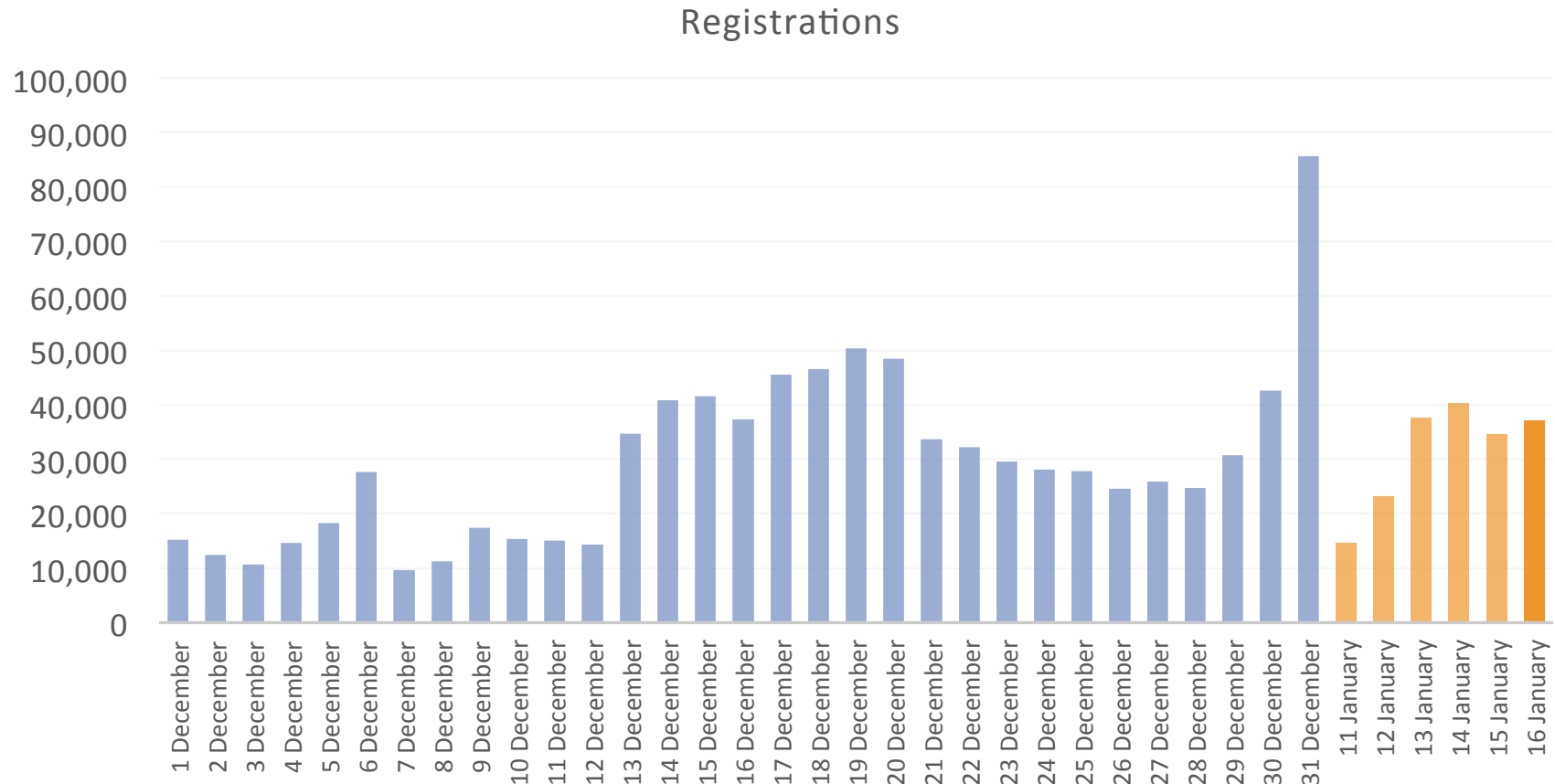
1-31 December

# Registration of Voters

• Registrants: 1,101,025

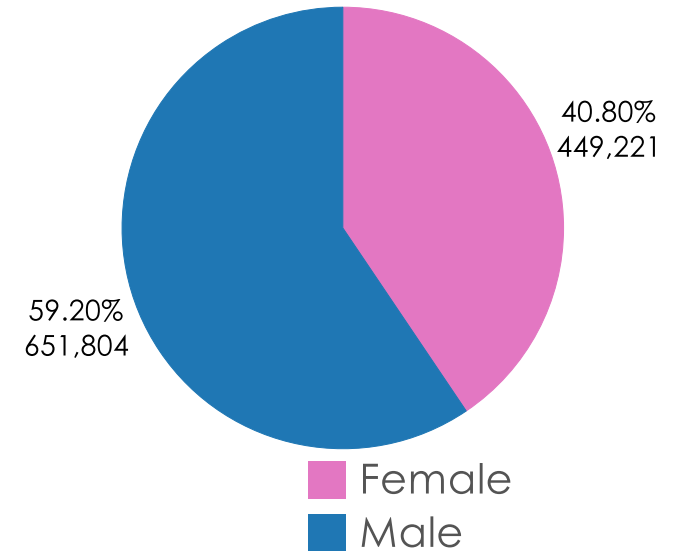
By SMS: 1,086,704

In-Person: 14,321



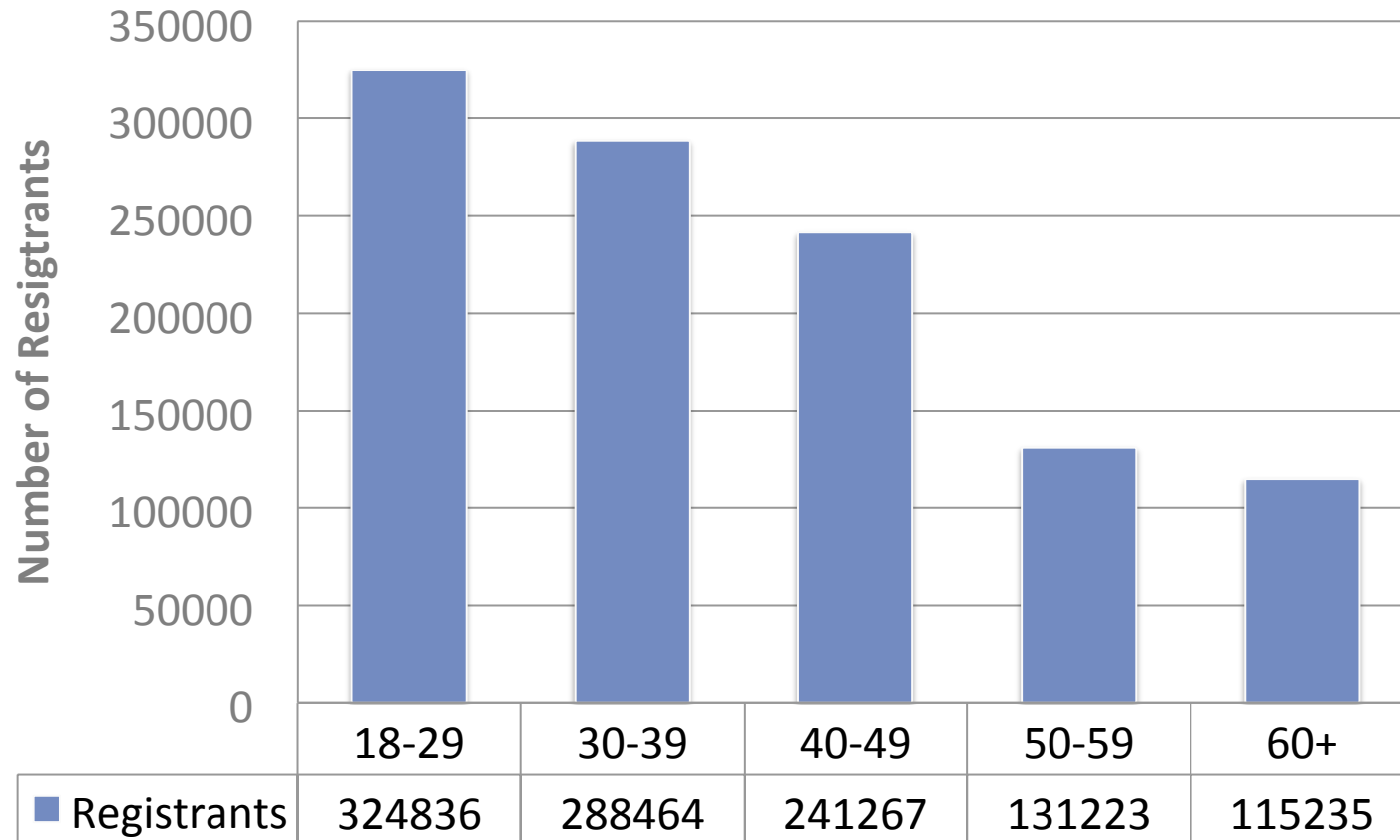
# Registration of Voters

Office	Men	% Men	Women	% Women
Sirte	14,164	63%	8,292	37%
Misrata	67,155	60%	44,913	40%
Khoms	34,262	68%	16,369	32%
Tripoli	167,922	56%	129,908	44%
Azizya	29,796	62%	18,427	38%
Zawiya	49,720	59%	34,215	41%
Jebel 1	17,604	61%	11,433	39%
Jebel 2	17,777	61%	11,391	39%
Sabha	24,241	62%	14,739	38%
Obari	26,373	59%	18,344	41%
Ghadames	3,432	55%	2,756	45%
Tubruq	21,951	58%	15,831	42%
Derna	15,276	60%	10,249	40%
Al Beida	41,970	61%	26,587	39%
Benghazi	89,257	59%	62,974	41%
Ajdabiya	21,213	60%	14,414	40%
Al Kufra	9,691	54%	8,379	46%
<b>Total</b>	<b>651,804</b>	<b>59%</b>	<b>449,221</b>	<b>41%</b>



# Registration of Voters

Registrants by Age Group



# Registration of Voters

Possible reasons for modest rates of registration: frustration with performance of political institutions; lack of awareness; lack of knowledge regarding candidates, etc.



Electoral centre codes : from design to reality (photo credit: HNEC)



# Dispute Resolution

## Challenges/Appeals

Challenges to eligibility of candidates or voters; challenges to preliminary elections results



## Complaints

Complaints of a procedural or administrative nature



# Campaigning

- Campaign period began on 25 December (giving 51-64 days of campaigning)
  - ❌ No pressure, intimidation, accusations of treachery or apostasy, enticement or promises of financial or public or private moral gains to the voter
  - ❌ No slander, deceit or fraud
  - ❌ No use of public finances, assets, emblems or powers
  - ✓ Use removable signs and posters
  - ✓ Abide by campaign spending limits and reporting requirements
- Campaigning to cease 24 hours prior to polling.

# Campaign Finance Limits

Main Constituency	Sub-Constituencies				
	First	Second	Third	Fourth	Fifth
Sirte	28,000	11,000	27,000	-	-
Misrata	50,000	37,000	38,000	37,000	-
Tripoli	69,000	65,000	94,000	69,000	-
Zawiya	45,000	34,000	12,000	41,000	73,000
Tobruk	38,000	15,000	31,000	-	-
Green Mountain	14,000	37,000	26,000	12,000	-
Benghazi	86,000	7,000	23,000	-	-
Ajdabiya	31,000	11,000	16,000	-	-
Sabha	28,000	11,000	-	-	-
Awbari	22,000	23,000	6,000	-	-
Ghadames	7,000	-	-	-	-

# Polling & Counting

Office	Centres	Stations
Sirte	94	175
Misrata	122	331
Khoms	106	225
Tripoli	275	831
Azizya	102	212
Zawiya	169	362
Jebel 1	43	97
Jebel 2	93	172
Sabha	63	142
Obari	69	160
Ghadames	12	27
Tubruq	53	125
Derna	47	103
Al Beida	98	235
Benghazi	178	471
Ajdabiya	60	142
Al Kufra	15	46
	<b>1,599</b>	<b>3,856</b>

## Special Measures

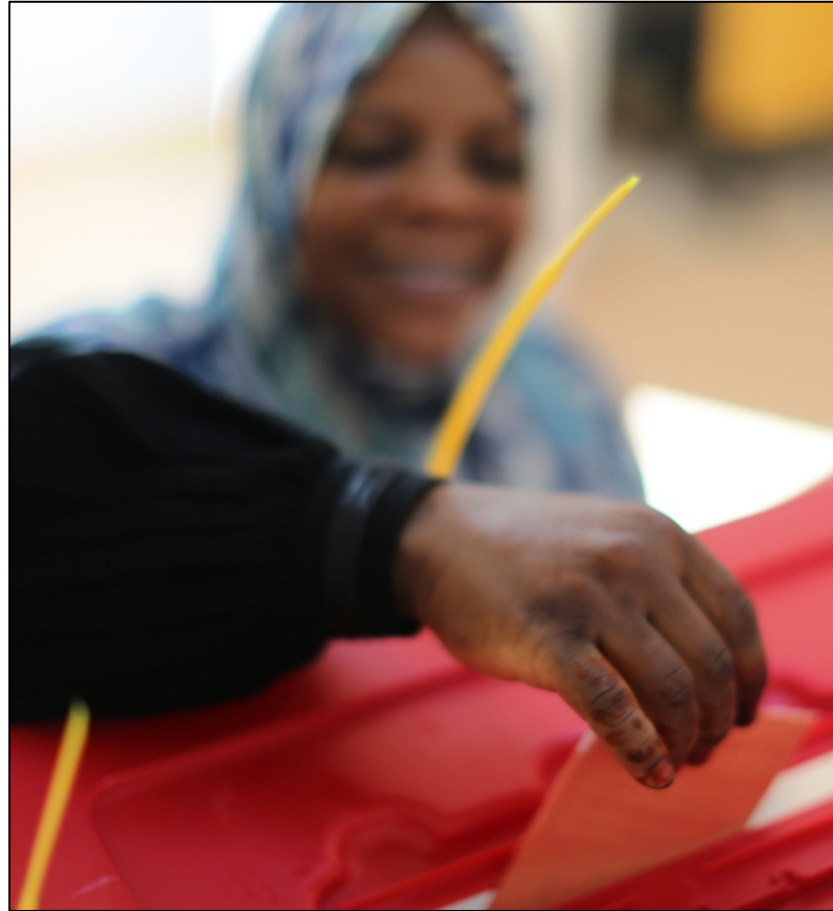
- 16 Centres for internally displaced persons
- 19 Centres at industrial installations
- 1 Centres at rehabilitation facilities

---

Interactive mapping of all electoral centres

**hnec.info**

# Polling & Counting

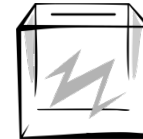


Voting in 2012 (Photo credit: UN)

## Electoral Materials



Approx 3M ballots  
51 races  
Ready by early February



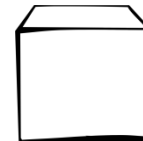
7,000 ballot boxes



10,000 indelible  
ink



12,000 voting  
screens



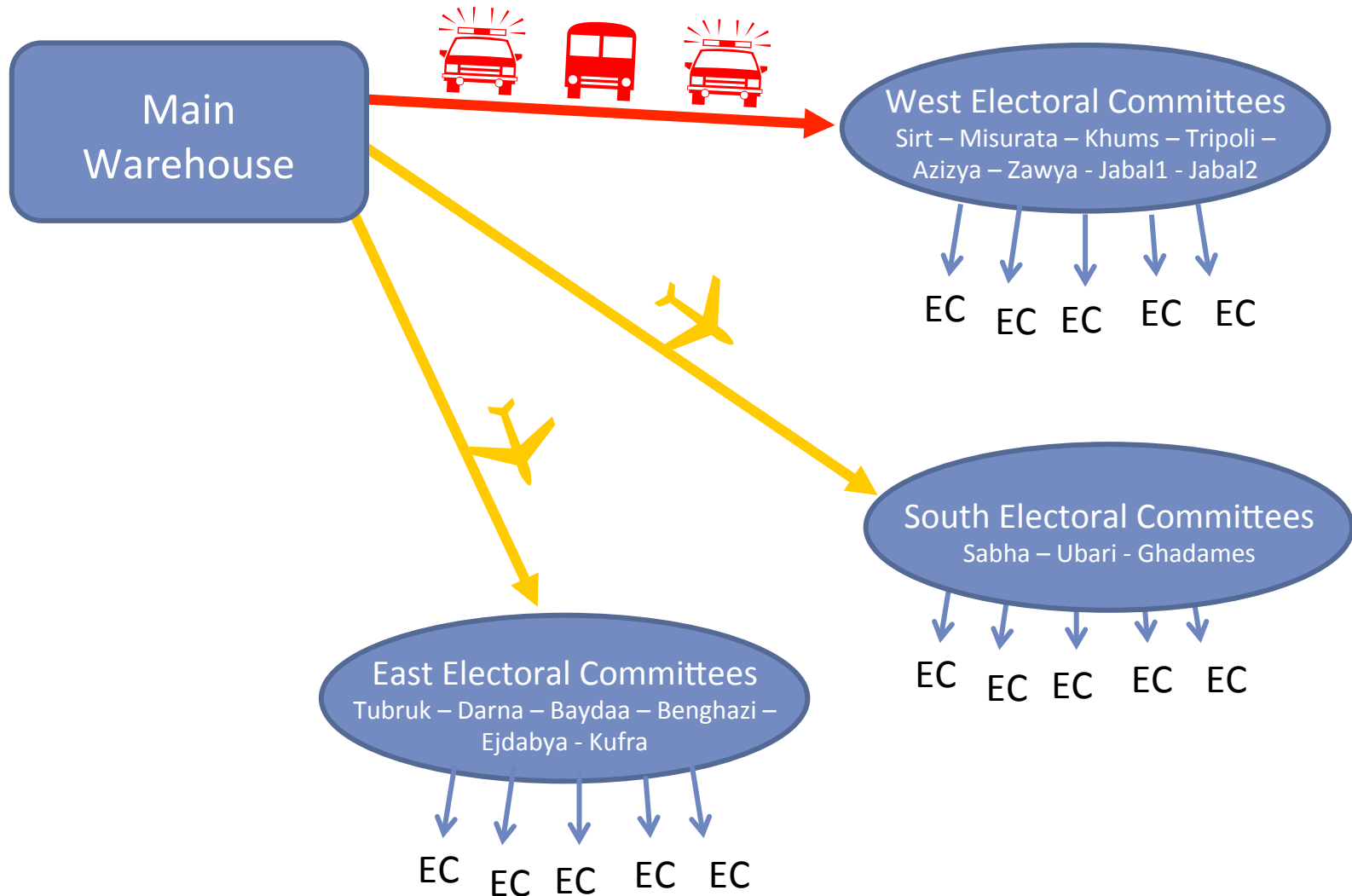
4,500 polling kits



35,000 tamper  
evident bags



# Polling & Counting



# Polling & Counting

## Training Cascade

Polling & counting

Core trainers

44 persons



District-level trainers

200 persons



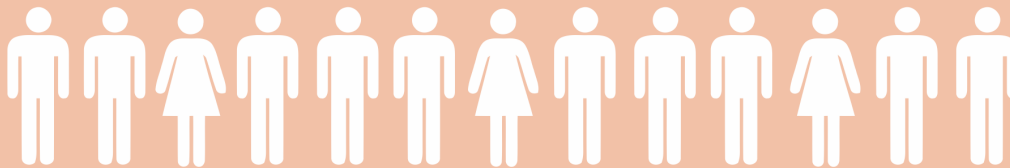
Electoral centre/station  
managers

Approx. 5,500 persons

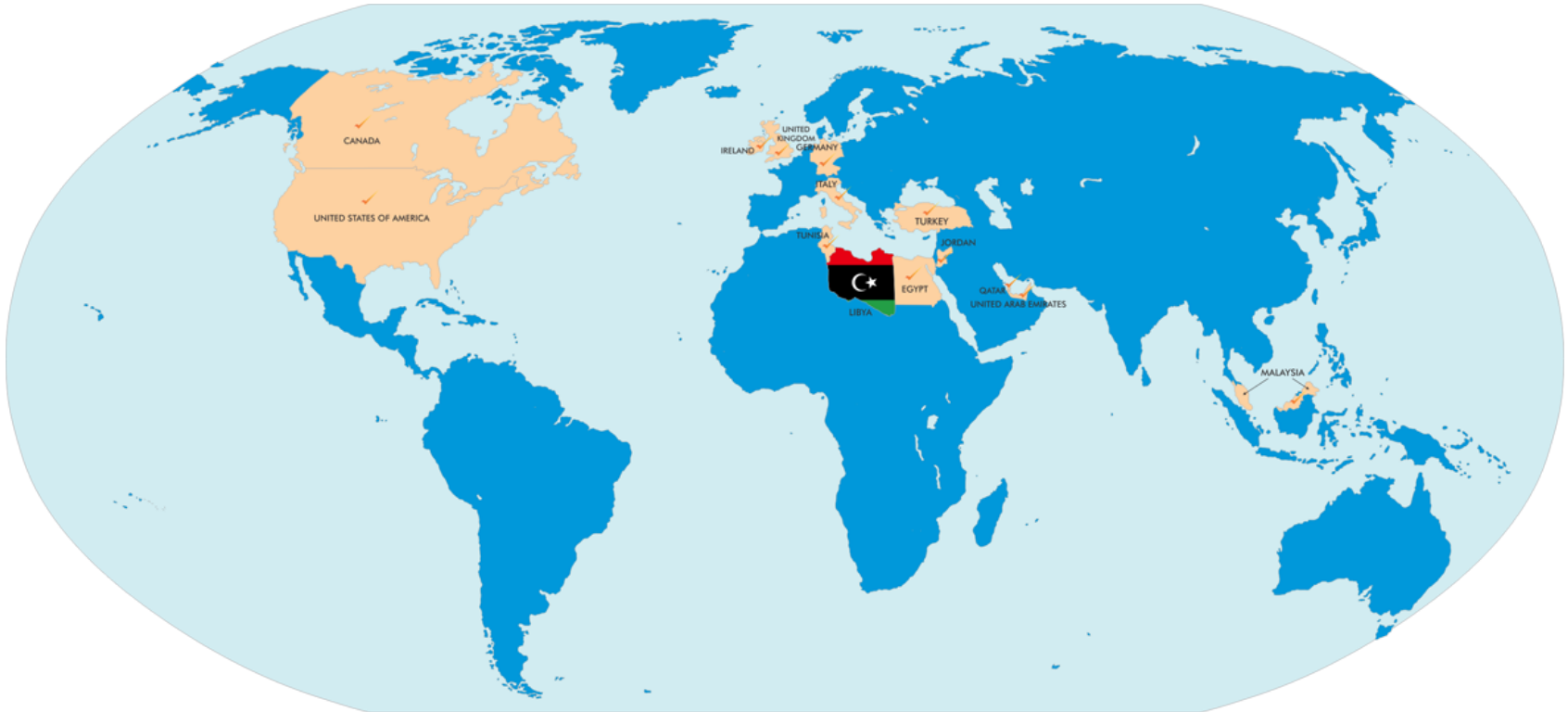


Electoral centre  
staff

Approx. 19,000 persons



# Out of Country Voting



As of 20 January, there were **6,043** voters registered (31% women)

Registration ongoing  
[voteabroad.ly](http://voteabroad.ly)

# Accreditation

## Guest status

Representatives of invited governments, embassy officials and international organisations accredited in Libya.

## Accreditation as of 20 January:

760	Domestic observers
58	National media
171	Candidate agents
5	International observers
11	International media
0	Guests
1,005	Total (18% women)



# Questions